



# **TECTONIC LED CORP.**

ISO 9001:2000 Products RoHs Compliance

## Outdoor Sign Maintenance Instruction Manual



- Ⓟ Signs can be folded and the surfaces can be opened. makes it easy to maintain and install.
- Ⓟ Outdoor waterproof sign can show all kinds of videos, pictures, words, texts temperature and humidity.

# Features and Advantages

- ★ The sign is asynchronous system and can play the video, audio, date, time, clock, picture, form, flash, text, word, temperature and humidity without computer.
- ★ The sign can be folded. It is good for maintenance and install.
- ★ The controller can supports single color sign, double color sign, real full color sign and virtual full color sign.
- ★ The flash memory is up to 500Mbit and can support extended USB disk.
- ★ The program is sent by LAN or GPRS or RF or 3G or internet or RS-232.
- ★ The sign automatically run day and night with automatic brightness control.
- ★ The controller build-in industrial ARM9 Linux system keeps the system reliability.
- ★ The screen is Extra Wide Viewing Angle, horizontal larger than 120 degree and vertical 60 degree;
- ★ The unique water-resistant and salt-resistant cabinet mechanical design makes the cabinet with IP65 ingress protection level.
- ★ 4096 grey levels and 560Hz refresh rate ,achieving good movies effect.
- ★ Timing broadcast and switch
- ★ Projects proven product reliability.

# Show temperature humidity date and time



# Play movies

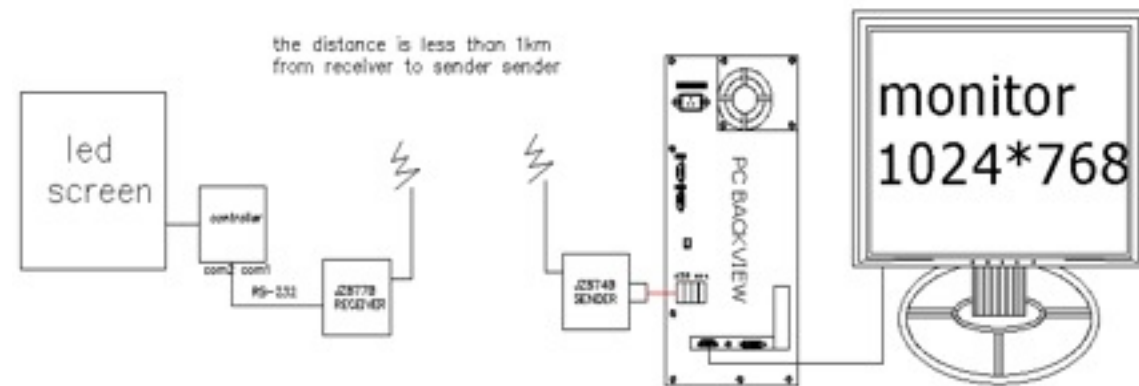
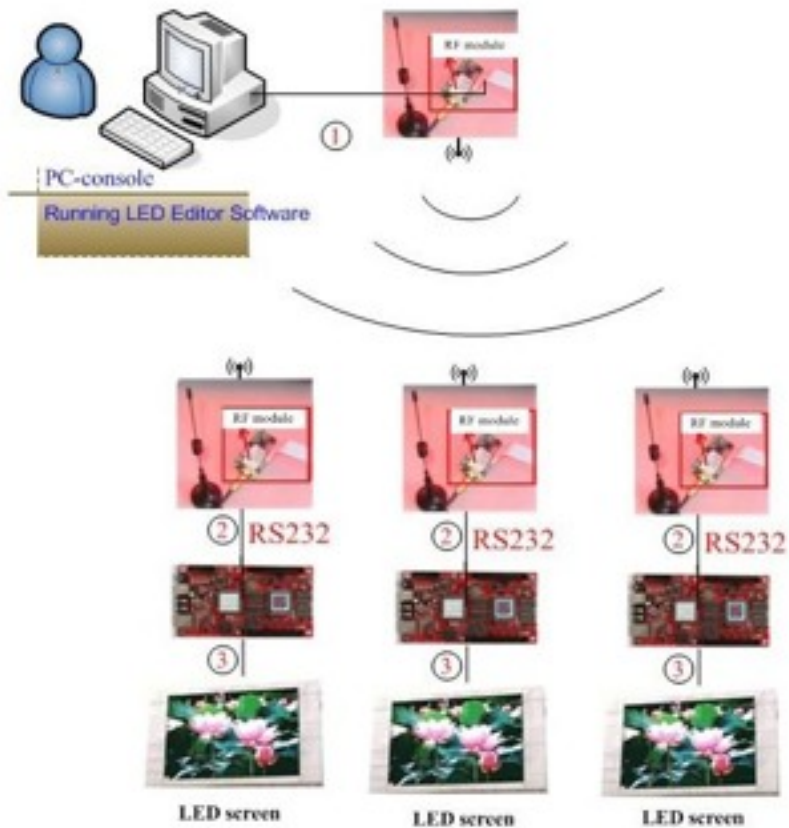


Movies effect is the same as synchronous system.



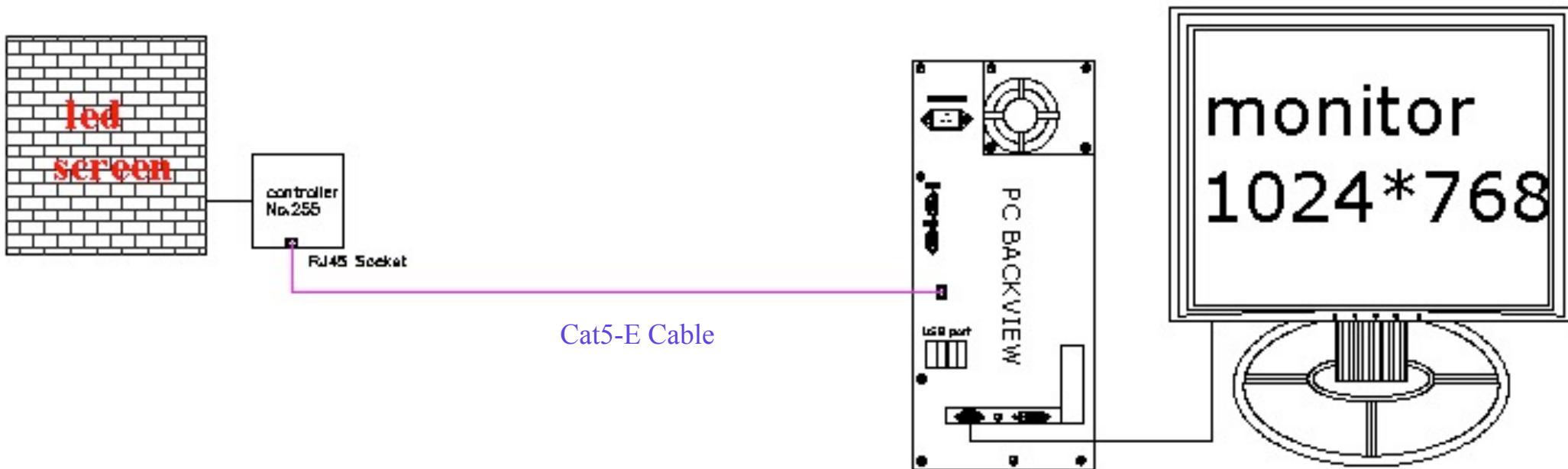
# RF unit

RF unit can support single color and double color sign.



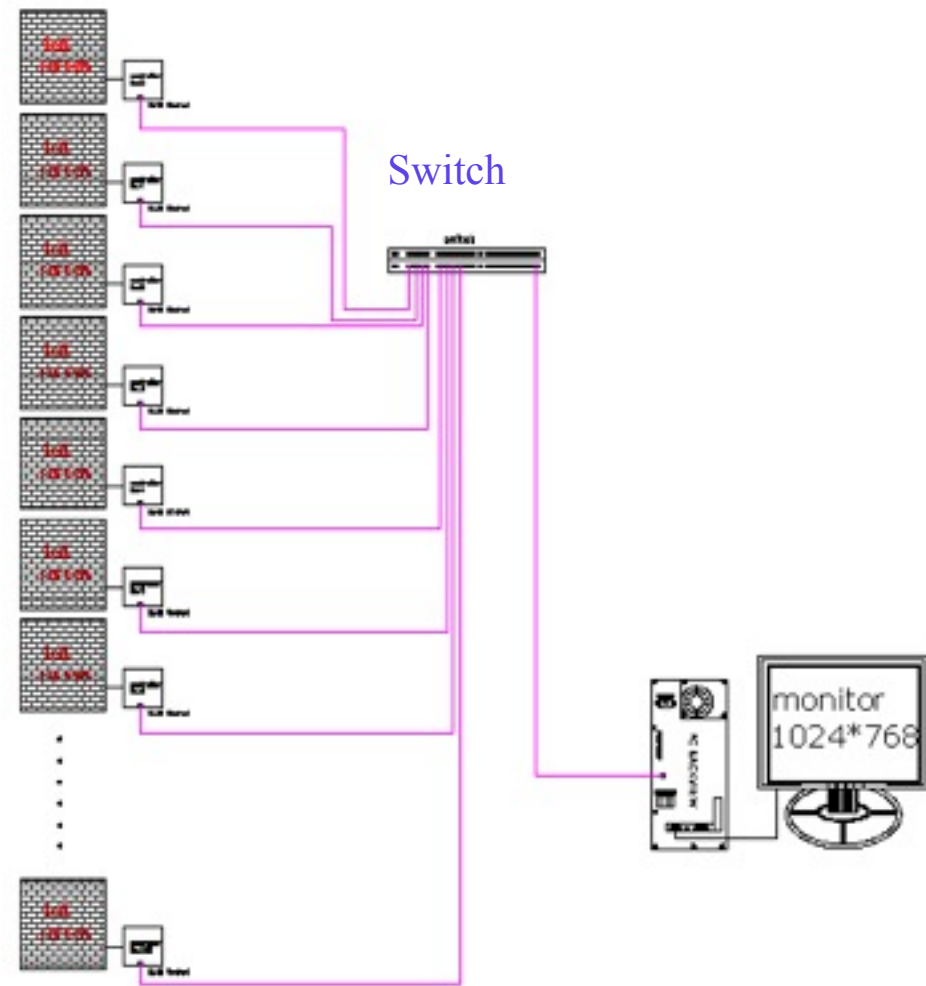
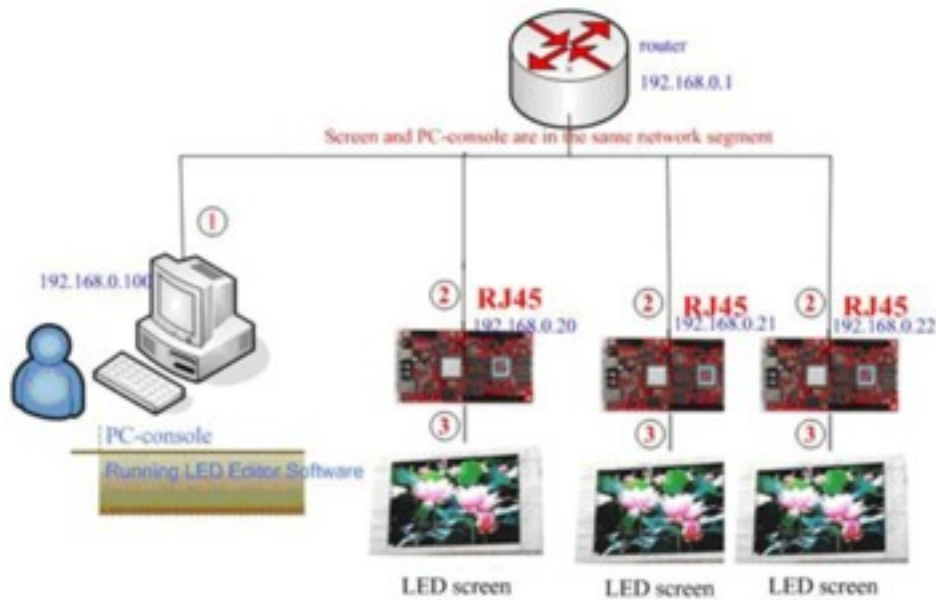
# Control by LAN

Support all kinds of signs. The distance from computer to controller is less than 150meter



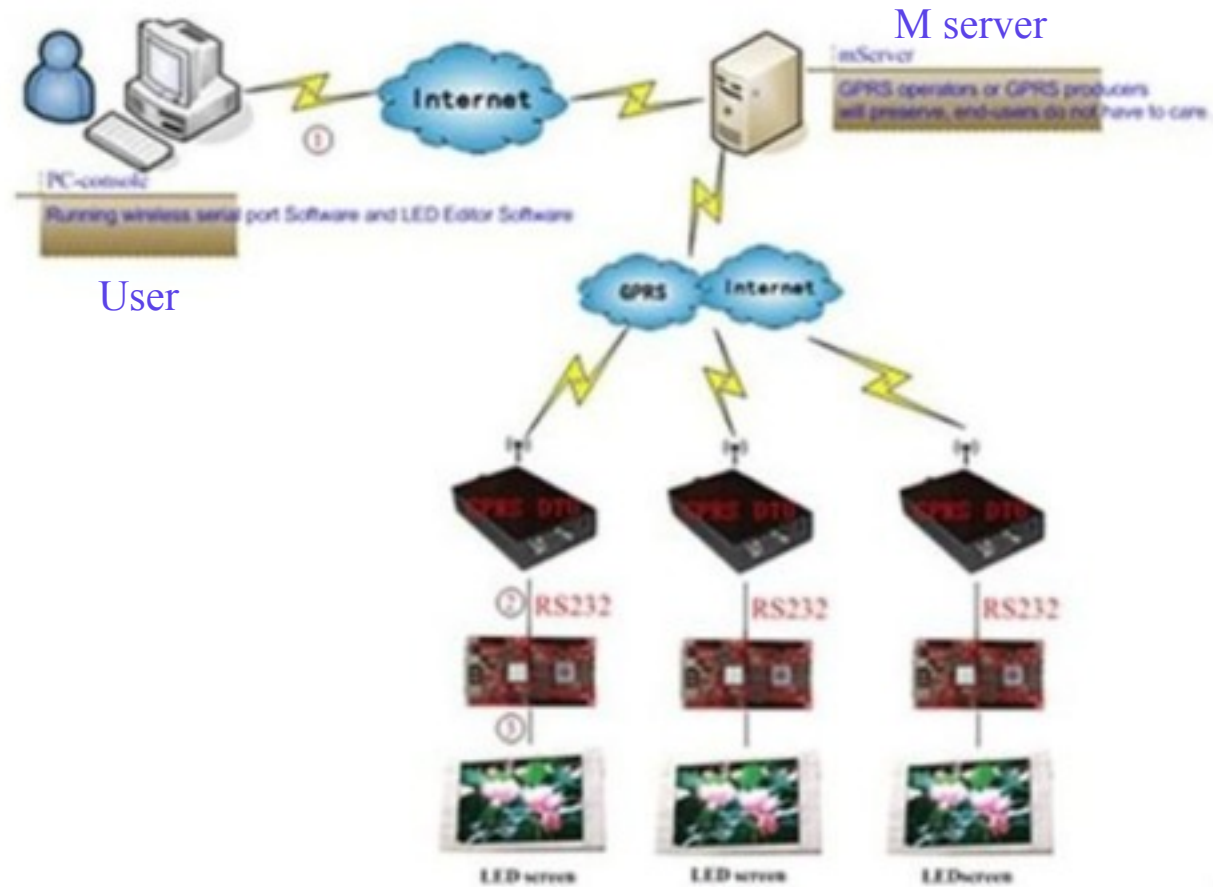
# Control by LAN

We can send the programs by LAN.



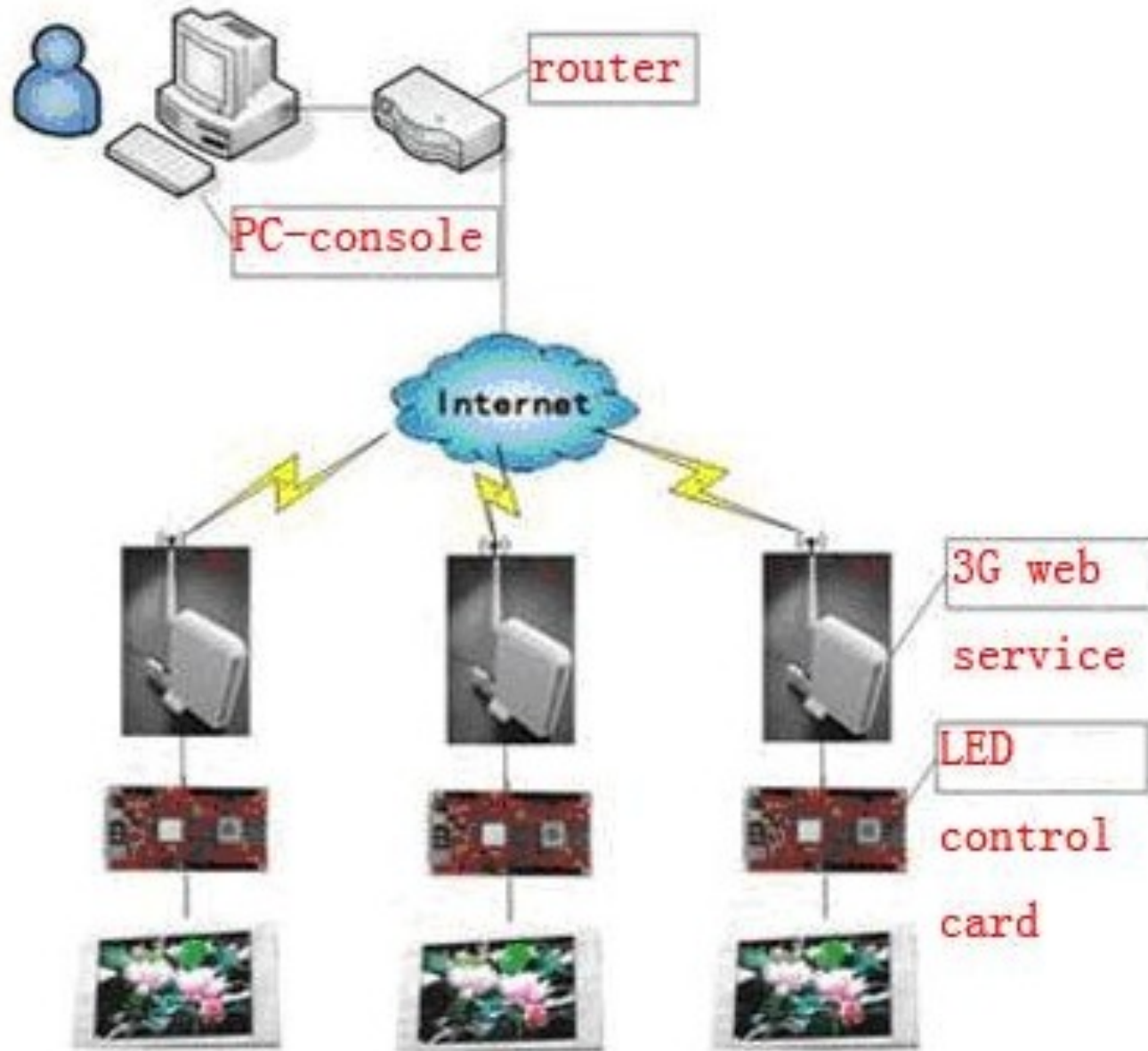
# GPRS

- A. Connect PC with ADSL router by LNA line. Inserting ADSL router into Internet by telephone line or in other ways.
- B. Connect control card with GPRS modules by serial port 232.
- C. Connect control card with display screen by normal adapter plate or flat cable.





# 3G



# 3G

A. User can apply for two domain names. A name one (such as alahover.gicp.net) and a spare name (such as alahover.dyndns.org). It is recommended that those two names belong to different domain name suppliers.

B. Screen mnemonic name helps users to remember and distinguish the screen which is controlled by the control card.

C. If the PC gets static IP then please select “Server IP” option and input the IP address directly. After finishing above steps, please confirm that control card has connected with the router by cables.

# 3G Terminal

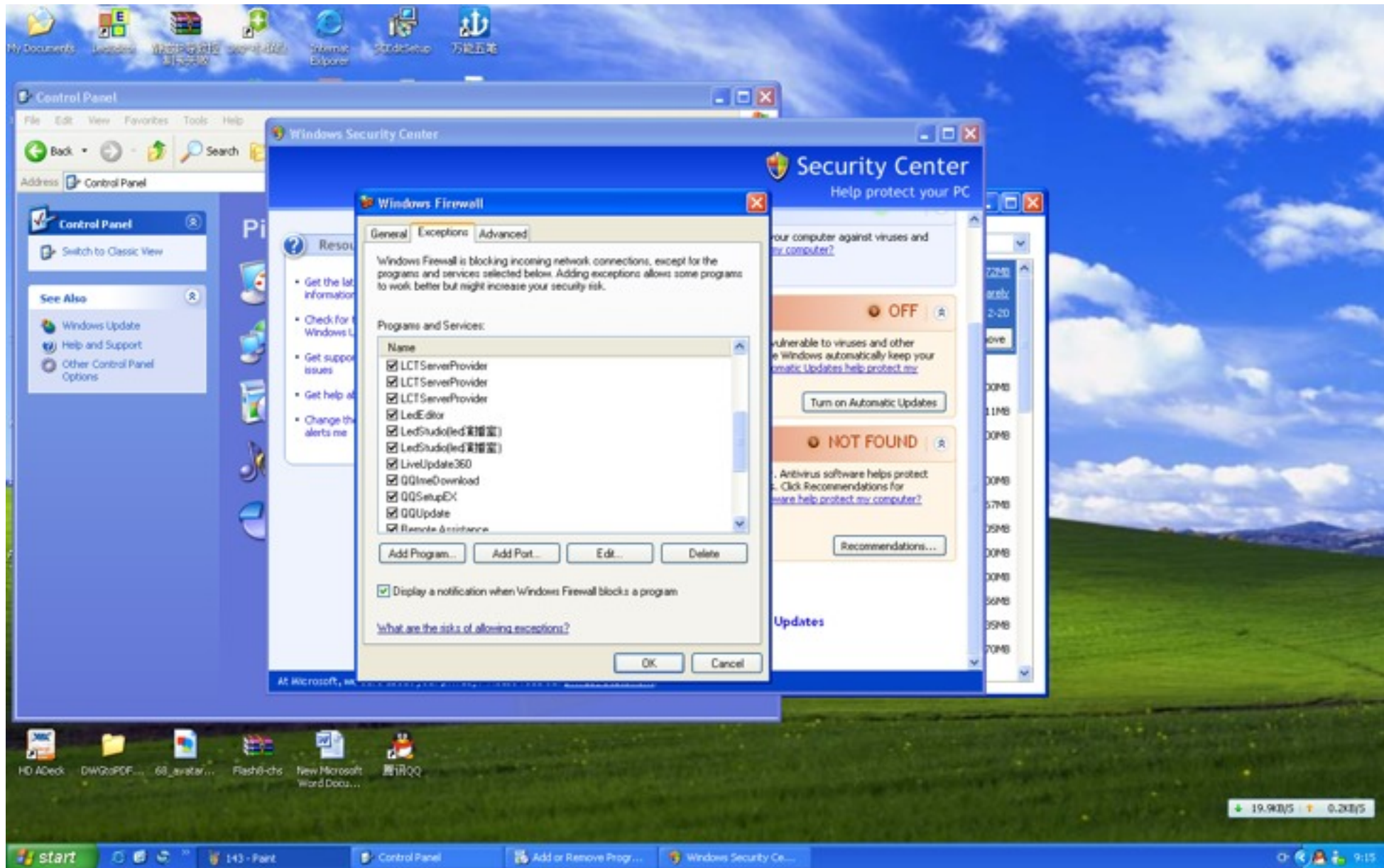


The wireless can be put outside the sign and receiver the signal from internet.

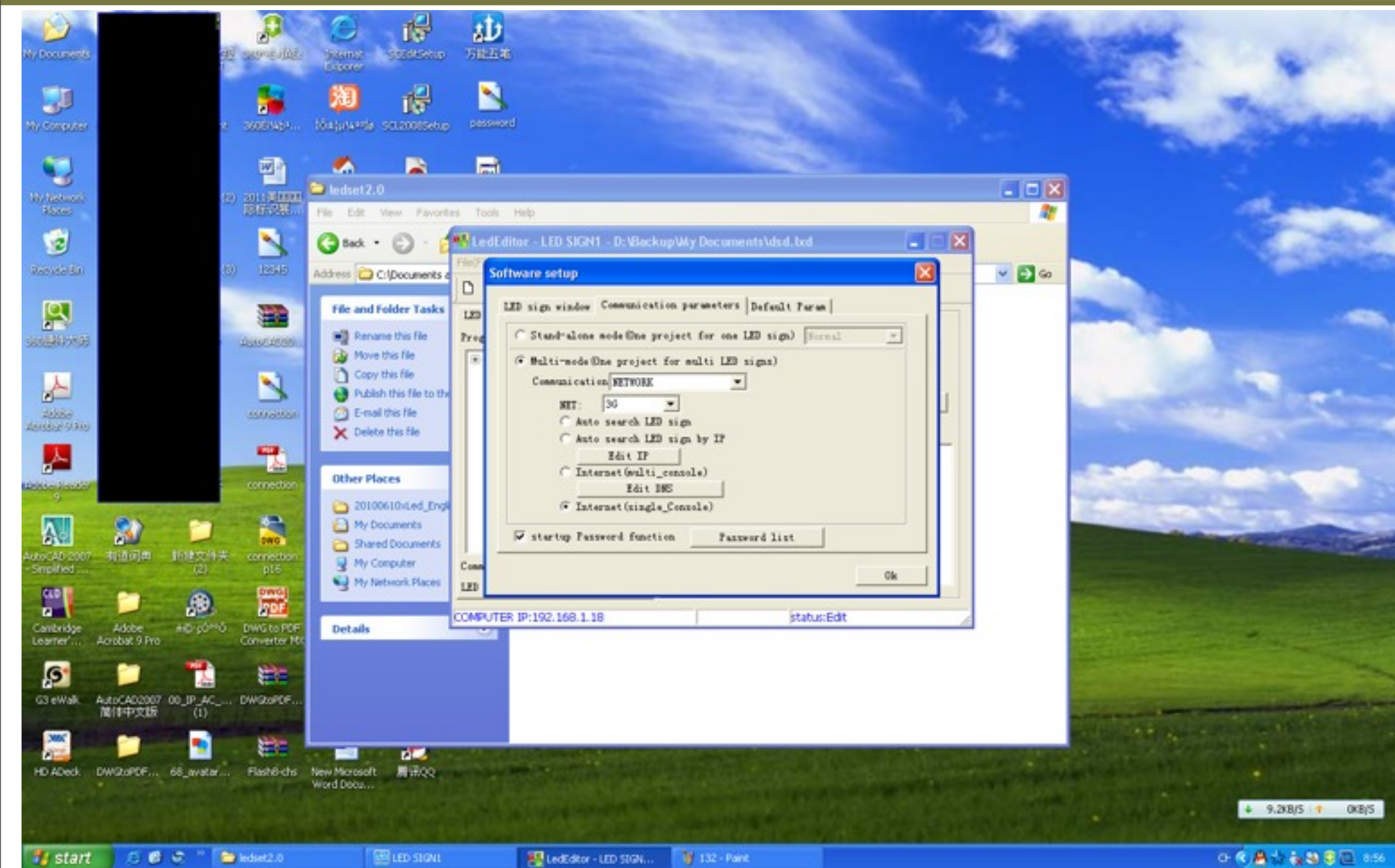


3G modules with WCDMA card

# 3G Terminal



# 3G Terminal



# 3G User

The screenshot displays a Windows XP desktop environment. The desktop background is a blue sky with white clouds over a green field. The taskbar at the bottom shows the Start button, several icons, and the system tray with the time 8:55. The 'ledset2.0' application is open, and its 'Hardware setup' dialog box is the primary focus. The dialog box has a title bar with 'ledset2.0' and standard window controls. It contains several sections:

- Hardware setup**: A section with a 'Refresh' button and a 'Go' button.
- IP parameter**: Fields for IP address (192.168.1.155), Subnet mask (255.255.255.0), and Default (192.168.1.1), each with a 'Send' button.
- Serial port parameter**: Fields for Serial (COM3) and Baudrate (57600), each with a 'Send' button.
- Open internet mapping port**: A checkbox and a field with value 31299 (0~65535) and a 'Send' button.
- Link Server**: A checked checkbox, a 'Server Domain' field, and a 'Server IP' field with value 119.145.13.225 and a 'Custom Name' field with value ME-LE32, each with a 'Send' button.
- ID config(485 serial or RF)**: A checked checkbox, a field with value 70, and a 'Send' button.
- PASSWORD**: Fields for Old Key, New Key, and Exponent, and a 'Decryption' button.
- Other process**: A checkbox and a 'Close' button.

In the bottom right corner, a 'Tip message' dialog box is displayed with the following text:

Connect Led sign[192.168.1.155]  
[Timeout 1. Make sure the power cord is connected 2. Make sure the communication cable is connected 3. Whether or not the correct ip address]

At the bottom of the tip message dialog, there are two buttons: '+ OKByS' and '+ 0.03KB/S'.

# 3G User

Wireless Gateway - Microsoft Internet Explorer

Address: http://192.168.0.1/en/content.asp

yes OPTUS Wireless Broadband Gateway

CU-GSM SM WAN HSDPAUMTS 3G

Basic Status

Quick Setup

Connection

Advanced Settings

Logout

Refresh

**WAN Status**

Connect Status:	Connected
IP Address:	10.201.117.137
DNS Server:	221.4.8.1
	10.11.12.14
Receive:	18.18 KB
Send:	5.75 KB
Duration:	00:01:06

[Advanced...](#)

**LAN Status**

MAC Address:	00:1E:10:10:0F:59
IP Address:	192.168.0.1
SubNet Mask:	255.255.255.0

[Advanced...](#)

**WLAN Status**

Name(SSID):	Optus Wireless Broadband
SSID Broadcast:	Enabled
Encryption:	Disabled

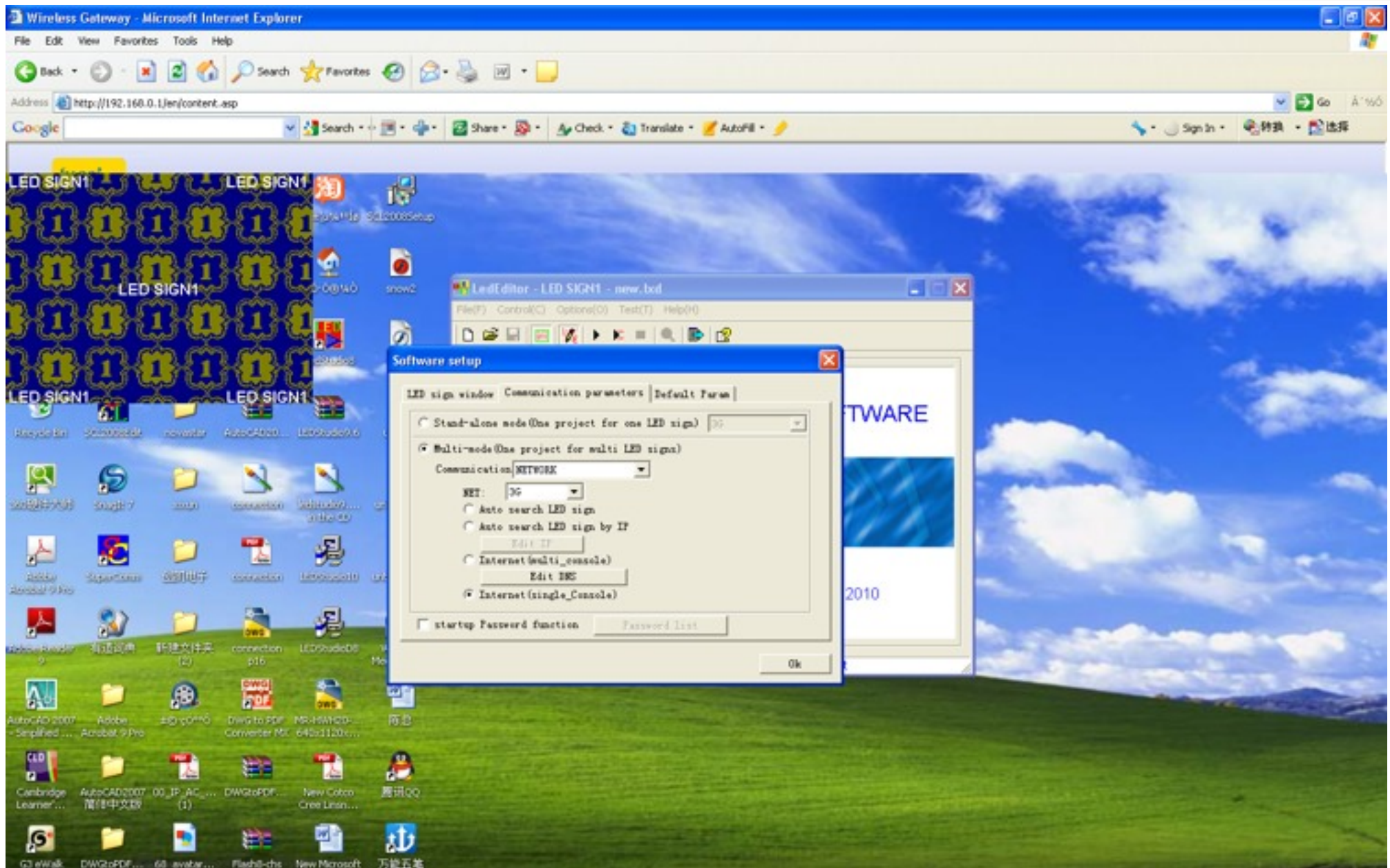
[Advanced...](#)

COPYRIGHT (C) 2006-2007 HUAWEI TECHNOLOGIES CO.,LTD. ALL RIGHTS RESERVED.

0.2KB/S 0.0KB/S

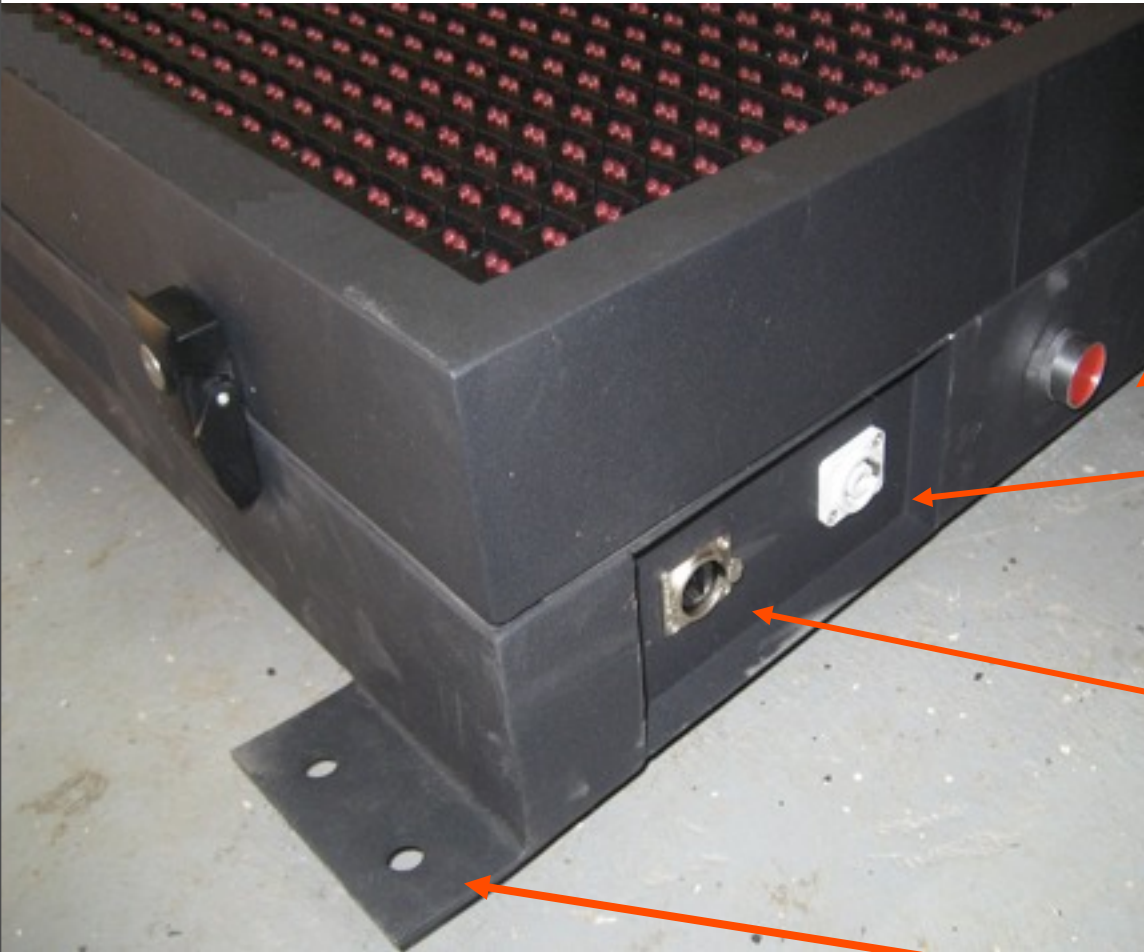
start Windows Live Messenger Wireless Gateway - M... Internet 8:06

# 3G User





# Sign cabinets



Power switch

Power in connector

RJ45 sockets

Fixed on the wall

# Sign cabinets

Hinges on the top of signs



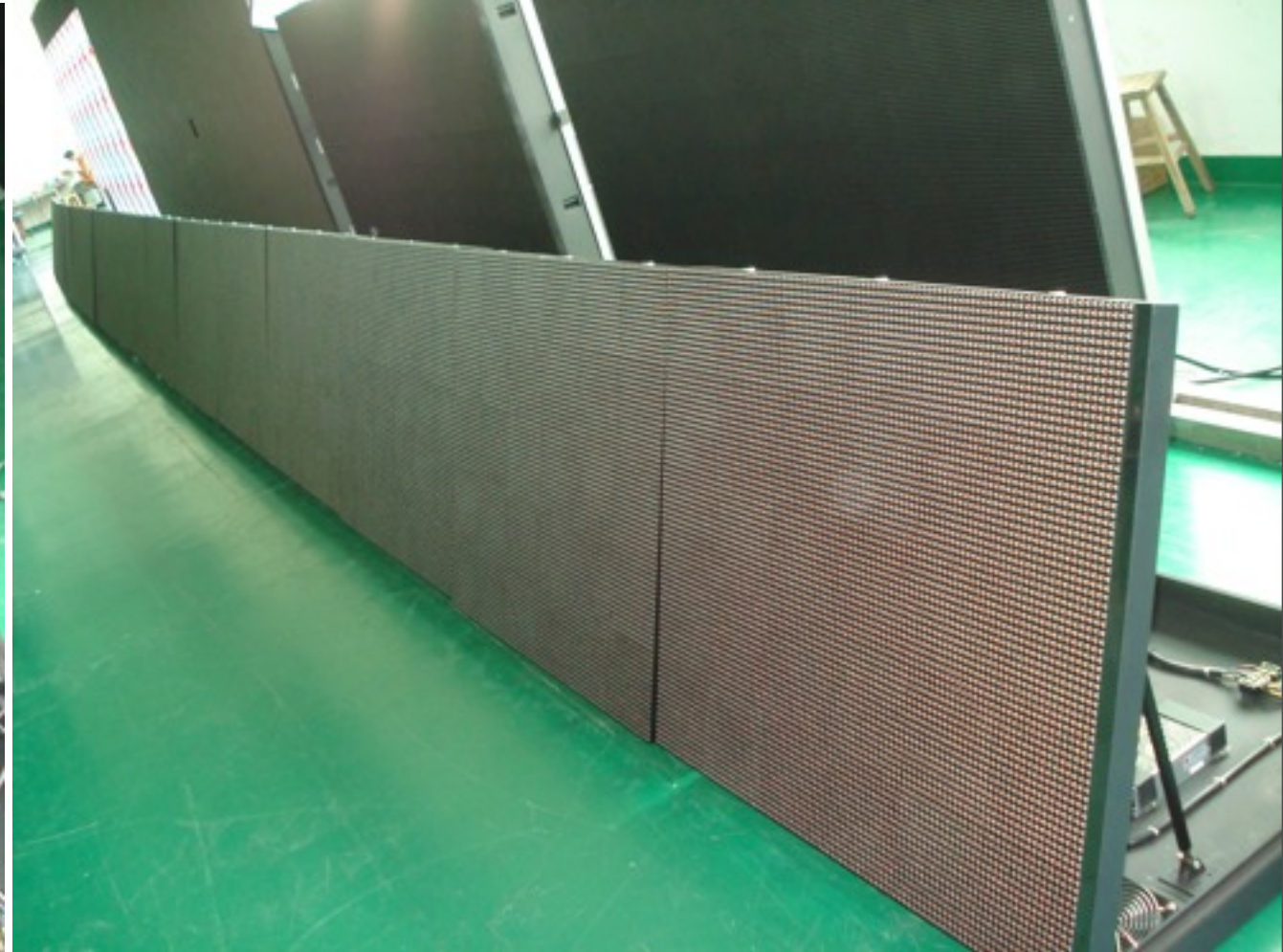
# Synchronous system

---

The folded cabinets can also be used to  
synchronous system.

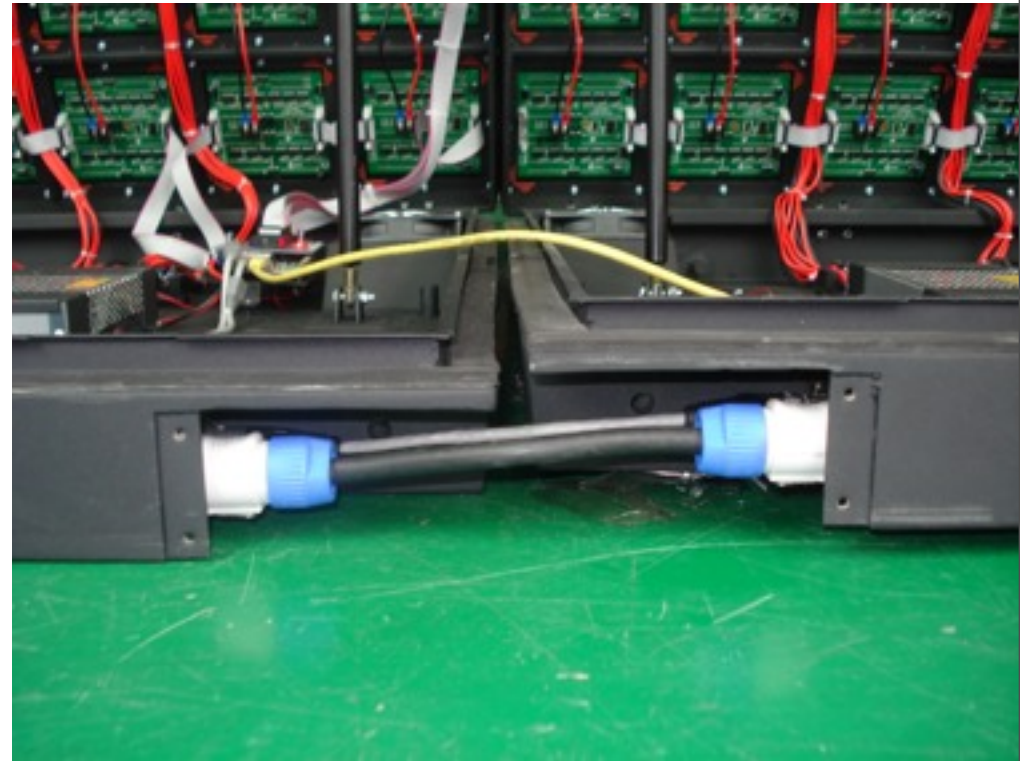
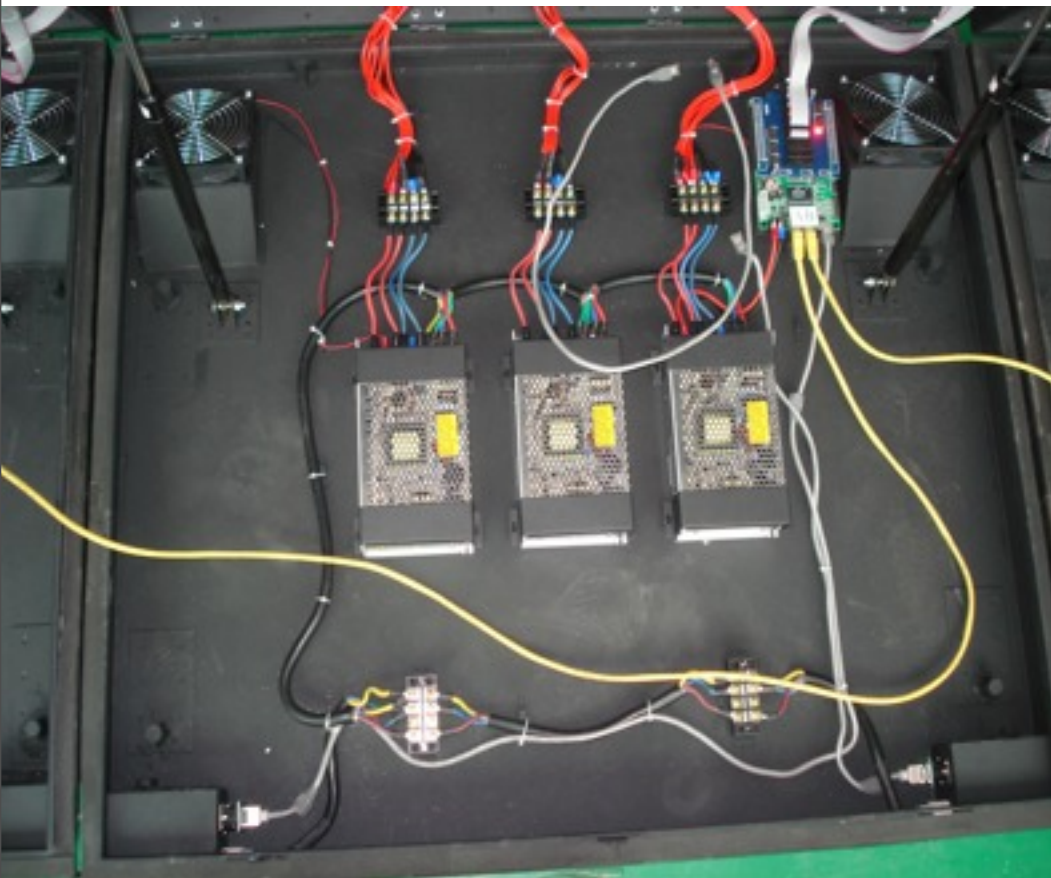
# Synchronous system

P10 outdoor screen fixed on the wall as “—” sign.



# Synchronous system

P10 outdoor screen connection



# Synchronous system

## P10 outdoor connection



# Projects gallery



# Projects gallery





# Projects gallery



# Projects gallery



# Projects gallery

